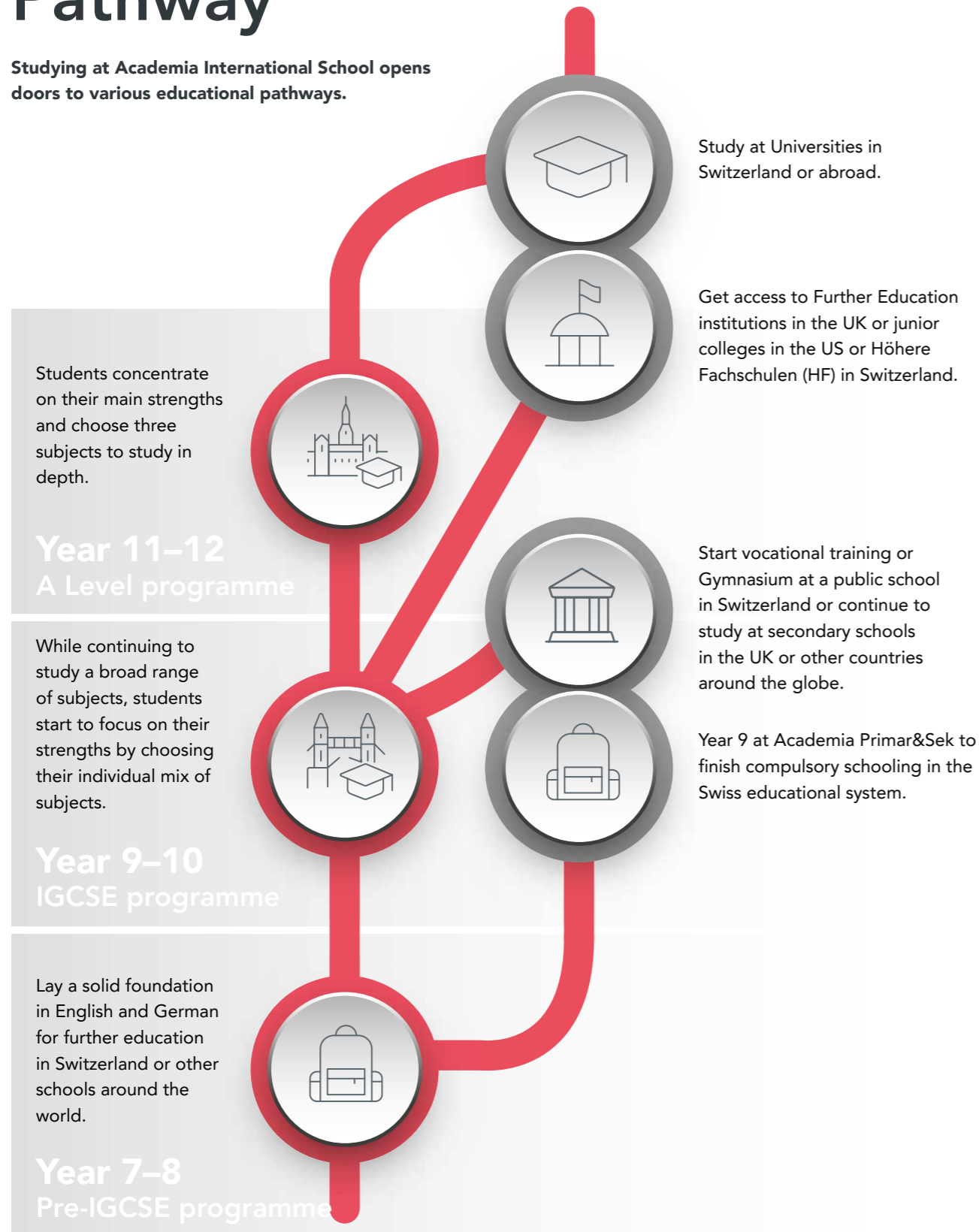


Educational Pathway

Studying at Academia International School opens doors to various educational pathways.



Lower secondary school
Our pre-IGCSE programme

Our Mission

A small school with a big heart

We are a school where learning and a growth mindset is at the heart of everything we do. We provide a warm-hearted space where students feel safe to develop academic inquiry and resilience in a context underpinned by respect and care. We endeavour to provide a school community where all students reach their potential.

- ✔ Broad curriculum offering flexibility and choice
- ✔ Individual support in a warm and caring atmosphere
- ✔ Holistic approach with innovative teaching and learning
- ✔ Internationally recognised qualification with various pathways after just two years
- ✔ An outstanding team of committed, highly qualified teachers who have years of experience teaching the UK curriculum
- ✔ Established for 15 years in Basel

Curriculum

A unique bilingual curriculum

In Years 7 and 8, students follow a broad and balanced British international curriculum aligned with the English National Curriculum, building strong foundations in English, Mathematics, Science and Humanities, alongside a rich programme of Languages, Arts, Physical Education, Computing and Personal, Social, Health and Economic Education (PSHE). Teaching emphasises academic rigour, critical thinking and global awareness, preparing students for future IGCSE study. German is offered through two pathways: one for native speakers, focusing on advanced literacy and cultural studies, and one for non-native speakers, developing confidence and competence in German as a foreign language.

- ✔ Our graduating students can **continue with their education and lives in Switzerland** thanks to high levels of input in German.
- ✔ At the same time students **can take IGCSEs and re-access** the UK or other **international educational systems** with globally recognised academic currency.
- ✔ **More time is allocated to science** as this is a rich subject full of both content and new language for English native and non-native speakers alike.
- ✔ Science is also important if students hope to continue in the Swiss education system to **access courses and careers within STEM** (Science, Technology, Engineering and Mathematics).

Assessment

Assessment is balanced between subject knowledge and competency development. Students' academic progress in core subjects is measured against curriculum standards, with international benchmarking supported through Cambridge MidYIS data. In parallel, competencies such as critical thinking, collaboration and independent learning are assessed through structured teacher assessment and guided self-assessment, ensuring both measurable attainment and the development of transferable skills are carefully monitored.

Timetable

Model timetable at our lower secondary school

(subject allocation may vary)

	Monday	Tuesday	Wednesday	Thursday	Friday
8.20 – 8.35	Tutor Time	Tutor Time	-	Tutor Time	Tutor Time
8.40 – 9.45	French	Science	Music	Science	English
9.50 – 10.55	Geography	Maths	Maths	French	History
Break					
11.15 – 12.20	Maths	Music	History	Social and Emotional Learning	Geography
12.20 – 13.20	Lunch	Lunch	Lunch	Lunch	Lunch
13.20 – 14.25	Art	English	German PBL	English	German
14.30 – 15.35	Science	German	German	Sport	Elective ICT Coding Club
Break					
15.45 – 16:50	Elective STEAM	Elective Music	Elective Sports	Elective Study Hall	

■ Teaching language English
 ■ Teaching language German
 ■ Teaching language French

Extracurricular

Contributing to personal development

We offer a broad and engaging extra-curricular programme designed to extend learning beyond the classroom. Students can join Junior Science Club, where they prepare for and compete in Science Olympiads, participate in Junior Model United Nations, develop their programming skills in Coding Club, or take part in a range of Sports Extras. A weekly Study Hall supports academic success by explicitly teaching evidence-based study skills.

Our city-centre campus features a secure outdoor space where students can run, play football, table tennis or basketball, as well as sheltered seating areas for picnic lunches in the summer months. Enrichment is further enhanced through annual snow weeks and community-building mountain trips for all Year 7 and 8 students